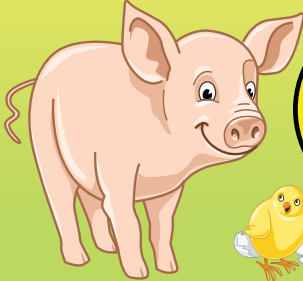


# Schools

Trips - Farm Visits  
Workshops  
Work Experience



Learning Outside the Classroom  
– specialising in KS1 & KS2



National  
Farm  
Attractions  
Network



# Every Trip includes:



- Bespoke programme
- Health & safety advice for risk assessments
- Farm staff supervised (CEVAS trained)  
Meet the Animals 'hands on' experiences
- Advice on Learning Opportunities and  
Cross Curriculum Links
- KS1 & 2 worksheets & farm quizzes

## ▶ Meet the Animals

- Chick handling – small groups of children  
handling very young birds – chicks,  
ducklings or goslings
- Bottle feeding – lambs &/or goat kids
- Hand feeding – sheep & goats
- Handling – pigs &/or piglets
- Egg collecting – egg shell colours
- Egg boxing – which end is the top of the egg?
- Trailer Ride – the larger farm animals,  
White Horse Hill

## ▶ Educational activities

- Spring, Summer, Autumn and Winter – quiz sheets
- KS1 & 2 – worksheets

## ▶ Adventure Play

- Giant Bale Climb – with tunnels
- Pedal Tractor Yard
- Indoor play areas
- Adventure playground
- Treasure Hunt – farm staff organised game  
with a small prize for each child - £1.25/child.  
A wet weather alternative to the Trailer Ride  
or instead of pocket money shopping



# School Trips & Farm Visits

Farmer Anne Gow has been welcoming schools and groups to Farmer Gow's for many years. It's a small family owned farm just outside Faringdon. 'Hands on' is the farm's speciality - uniquely organised to support learning through play/experience.

All weather fun - both indoors and outside.



## Farmer Gow's Visits to Schools

- Small workshops for 15-20 children
- Suitable for up to 100 children
- Available for school fetes

## School Trips

- Indoor and outdoor activities
- Action packed 4-hour programme
- Suitable for up to 120 children
- Farm diversification including green energy and re-cycling

## School Trip Rate

**£6.50/person (adults and children) including a trailer ride!**

General entry rates -  
£8/adult, £7/child, £1.25/trailer ride





## Activities & Facilities

Please note - Farmer Gow's is a supervised site - children will need the support of school staff throughout their visit.

- 1 Farm Shop**  
Entrance/exit, reception, pocket money shopping  
Chick handling & egg boxing led by farm staff, children supervised by school staff

---

- 2 Harvest Tea Room**  
Hot & cold refreshments served all day, facilities for people using wheelchairs

---

- 3 Abe Gow Barn**  
School Trip group areas, indoor play areas, wellie borrowing, indoor picnicking

---

- 4 Meet the Animals**  
Programmed 'hands on' farm animal handling and feeding. Led by farm staff, children supervised by school staff

---

- 5 Chicken runs**  
Egg collecting - led by farm staff, children supported by school staff

---

- 6 Trailer Rides**  
30 minute rides around the farm including feeding Pollyanna pig.  
Driven by farm staff, supported by school staff

---

- 7 Adventure Playground**  
Giant Sandpit and play climbing & balancing equipment

---

- 8 Farmyard**  
Washroom with toilets including baby change  
Pedal Tractor Yard, giant Bale Climb with tunnels,  
outdoor picnicking

---

Farmer Gow's is managed with a high regard to the environment. Litter bins are therefore not provided. Please come prepared to take your rubbish home with you!



# On the Farm



Farmer Gow's is fun for everyone all year round.



**7**  
Adventure  
Playground  
& Sandpit

**6**  
Trailer rides

**4** Meet the  
Animals



Daily  
11am & 2pm

Extra sessions are  
arranged for  
large groups

**5**  
Chicken  
runs  
Free range  
egg collecting



East  
Field

Indoor  
Bale Climb  
& Treasure  
Hunts

Washroom  
&  
Toilets



**3**

Abe Gow Barn

School Trips  
Indoor Picnic &  
Play Areas



Livestock

Bottle feed  
Lambs and Kids  
Pat and tickle  
calves and  
piglets

**8**

Farmyard

Outdoor Picnic  
Area



Pedal Tractors



Chick  
handling  
**2** Harvest  
Tea Room

Farm  
Shop

**1**



Free  
Car Park

Entrance



# Programme for School Trips



## On Arrival

There is a large car park for cars and coaches.

Enter through the Farm Shop to your reserved group picnic area within Abe Gow Barn, you can leave packed lunches and wellies here.

## Programmed activities (timings will vary)

Farmer Gow's will tailor a programme to your individual needs. On booking please advise the farm of your proposed arrival & departure times and the children's normal time for lunch. Below is a programme suggestion.

### 10 - 10.30 am **Arrival**

'Snack break' in reserved group area, farm staff brief school staff on programme and farm layout/location of facilities

---

### 10.30 - 11 am **Chick handling**

Children learn how to handle young birds - chicks, ducklings or goslings

---

### 11am - 12 noon **Meet the Animals**

Main barn, hand and bottle feeding of lambs &/or goat kids, wriggly pigs and piglets, goat walking, egg collecting.

---

### 12 noon **Lunchtime**

In group area, reserved picnic table space for everyone

---

### 12.30 pm **Trailer Ride**

30-minute ride around the farm to see & feed the larger farm animals - cattle, sheep, pigs

---

### 1 - 2 pm **Educational activities &/or Adventure play**

### 2 pm **Group photo on the Giant Bale Climb**

A wonderful memento of your trip



# Booking

Booking a School Trip, Farm Visit or Children's Workshop is easy. Just contact the farm office, it's open daily, 10am - 5pm.

Bookings are carefully managed to minimise stress to the animals.

You are welcome to visit us to undertake a risk assessment, please book your free visit with the farm office. A member of staff is generally available to show you around the site and answer any questions.

Farmer Gow's is open daily 10am - 5pm, 1 January - 23 December.

## Risk Assessments - Advice to Teachers

A pdf of the HSE's **Advice to Teachers and Others who organise visits for children** may be downloaded from the farm website'. [www.farmergows.co.uk](http://www.farmergows.co.uk)

How to  
find us

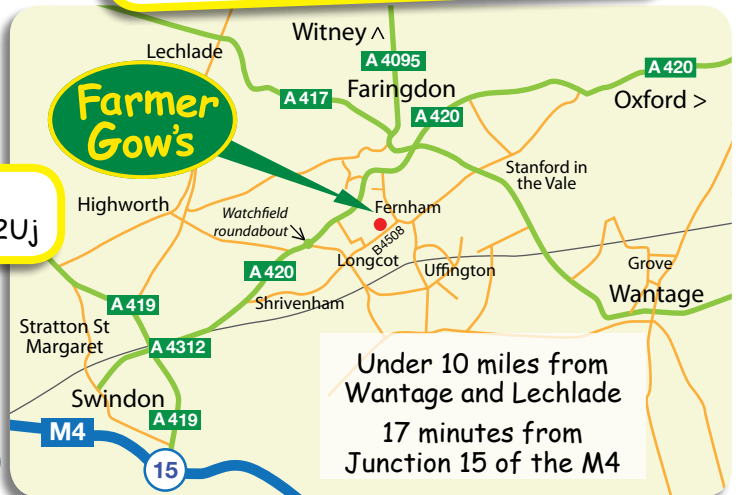
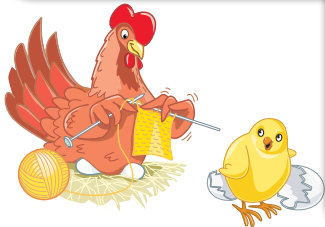
[www.farmergows.co.uk](http://www.farmergows.co.uk)

T: 01793 780 555

E: [enquiries@farmergows.co.uk](mailto:enquiries@farmergows.co.uk)

Farmer Gow's, Fernham Road, Longcot,  
Nr Faringdon, Oxfordshire. SN7 7PR

Google Map Reference:  
<http://goo.gl/maps/P82Uj>



# Key Stages 1 & 2 - Learning Op

## Literacy

### Speaking & listening

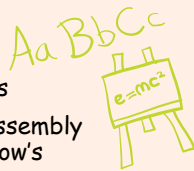
- Ask the farm staff questions
- Prepare a report or school assembly about your visit to Farmer Gow's
- Predicting what you will be doing on your visit
- Describe feelings, smells, observations, tastes

### Reading

- Read farm signs
- Spot writing in other areas of the farm, e.g. on feed sacks, in the farm shop, around the activity areas
- Complete a farm quiz

### Writing

- Write instructions or create a glossy leaflet for visitors to the farm - use drawings/ photos from your visit
- Make signs - warning or information
- Write stories, poems, recounts of a farm visit



## Geography

- Make a map of the farmyard or Meet the Animals barn
- Consider all the different land uses at Farmer Gow's - buildings for animals, activities, farm shop - the fields for car parking, chicken runs, woodland, woodland, pasture, tipi glamping and camping and farm tracks



# Far Go

## Science

- Go on a farm walk - what can you hear, smell, see, touch
- Friction - investigate tyres on the farm - what equipment are they on and how do they differ in size for their different purposes?
- Find living and non-living things
- Observe/find out how different animals move, feed, grow and reproduce



## Physical Education

- Observe how the different farm species move - and then try to move like your favourite farm animal.
- Most farm species are herbivores - investigate whether you are a herbivore or an omnivore and what this means to your diet.

## Design Technology

- Investigate different types of farm gate - ease of opening and closing, size, materials used
- Consider how the Meet the Animals yard has been laid-out - the hurdles, feed racks, gates and water troughs, feed troughs, seating area
- Design and build a chicken house with run. Consider building materials, space, size, access, ease of cleaning, number of perches and nest boxes







# Points to Consider

## Before You Come

- **Allergies** ~ please advise the farm, prior to your visit, of any allergies to farm animals - cattle, sheep, goats, chickens, pigs, ducks, turkeys, geese or ferrets. Allergies, including nut allergies, may be overcome by the wearing of plastic gloves - please discuss this with parents and Farmer Gow's prior to the trip.
- **Fencing** ~ farmers are responsible for securing their livestock. Various types of fencing are used at Farmer Gow's. Please discuss fencing with your children, including opening and shutting of gates, prior to your visit.
- **Religious matters** ~ please advise the farm prior to your visit of any religious concerns in the handling/feeding of any farm species, such as pigs.

Please ask for further information if you require it.



## Animal Handling and Feeding

- **Adult Supervisors** ~ we recommend adult supervisors who are comfortable handling animals - those with dog &/or cat experience are particularly good, as are those with previous farm animal experience. Farmer Gow's staff will support all animal contact but your children will gain the greatest confidence/support from adults with whom they are familiar.
- **Pet Experience** ~ we recommend a 'mini-survey' amongst your children prior to your visit to ascertain what previous experience they have in handling animals. Pets are particularly good experiences for children - because the child becomes more accustomed to a free roaming animal.
- **A Trailer Ride, Treasure Hunt or Farm Walk** ~ is included in your trip. Please note that the trailer ride carries approximately 40 seated persons (under 3s travel free but may need to sit on an adult knee). All children under the age of 8 years must be supervised by an adult. The trailer ride takes around 30 minutes and includes feeding farm animals en route. If it's too wet, a treasure hunt or a farm walk will be provided instead.
- **Chick Handling & Egg Boxing** ~ is held in the farm shop and will be led by a member of staff. Please note that staff will provide support and guidance to adult supervisors but your children will learn best and enjoy the experience most through your adults.

# Points to Consider

## Health & Safety - Hygiene

- **Hand washing** ~ the Washroom is in the farmyard
- **Baby change** ~ in the Farm Shop and in the toilets in the farmyard
- **Disabled toilet** ~ in the Farm Shop
- **Hand Gels** ~ were not designed for countryside bugs and are not effective at cleansing hands. Please do not bring them with you. Hand washing with soap and water is the safest method of preventing your children from picking up any bugs
- **Thumb & Finger suckers** ~ please take particular care to supervise your thumb & finger suckers - and your nose pickers
- **Wheelchair & Pushchair friendly** ~ all the main areas are accessible to pushchairs and wheelchairs.
- **Programme** - your programme will be arranged to minimise the number of times your children need to wash their hands. Where possible we will programme two animal handling/feeding activities together followed by time to wash hands. You remain responsible for the hand washing of your children.

'Everything has been thought through very well by everyone at Farmer Gow's. We all had so much fun! Even when it rained.' Bramleys Nursery, Ardington



# What Else?



## Administration ~ Group Area

- **Fun at the Farm** ~ Oxford Reading Tree's Kipper and Anna enjoyed their own School Trip to Farmer Gow's. Read all about their experiences in a complimentary copy of the book for each class visiting the farm.
- **Name labels** ~ we recommend name labels for all children visiting Farmer Gow's. Name labels are great for identifying children in your group but are also used by farm staff to interact very effectively with the children. Christian names only work best.
- **Group Area** ~ we will provide a group area, for the duration of your visit, in the Abe Gow Barn. You are welcome to leave packed lunches, extra clothing/footwear etc in this area.

Optional area within Harvest tea Room, close to the toilet for people with disabilities, if preferred.

- **Refreshments** ~ you are welcome to bring packed lunches. Hot & cold drinks and refreshments are available in the farm shop.

Children are very busy at Farmer Gow's and do therefore become very hungry. We recommend a 'snack break' on arrival and are happy to arrange 'Meet the Animals' and trailer rides around the children's normal lunchtime.

- **Pocket money shopping** ~ the farm shop includes a Pocket Money table, with items priced £1-5.
- **Goody Bag** ~ the farm provides a complimentary 'goody bag' at the end of each School Trip with a copy of 'Fun at the Farm', age appropriate quizzes/colouring sheets, farm brochures for each family.
- **Wet weather** ~ the farm has extensive indoor areas and it rarely rains for long. It is however useful to bring Wellington boots during periods of inclement weather. Please note that the farm's 'Wellie Shelves' include some 60 pairs of adult and child sizes of wellies, which are freely available on loan to all visitors.



# Work Experience

## For 14-16+ year olds with an interest in farming

Work Experience is expensive to provide - we therefore expect a huge commitment from students to achieve as near as possible balance between the learning opportunities and training provided by Farmer Gow's and the work a student performs.

Farmer Gow's is open to the public 358 days of the year - we therefore need to ensure that you work carefully and safely - with both our animals and our visitors.

### **We are registered with the Oxfordshire Work Experience Scheme**

- 1 & 2 week opportunities for students aged 14-16 years
- 1 day a week for 1+ years for students 16+ years, interested in careers working with animals'

### **We will teach you to**

- listen carefully to instructions
- follow those instructions and
- provide feedback to senior staff on all elements of the task in hand

We will supervise you thoroughly until we are sure you can follow instructions correctly and accurately. As your confidence grows and your ability to correctly perform tasks improves we will start to 'step back' and allow you to grow in the level of responsibility we give you.

We will challenge you - and if you work hard and listen carefully - you will have a fantastic time. You will learn loads and loads and loads. Your confidence will grow. You will meet many new people and learn to talk to them, work with them, ask them for help.

And that's just in your first few weeks... see website 'Work for Us ~ Work Experience' for further details



# Farm Visits to Schools

## How we can bring the farm to you

If you can't come to us, we can come to you. Farmer Gow's is happy to bring farm animals to your establishment so that you and your children can enjoy some wonderful 'hands on' experiences.

30 minute - 6 hour visits, depending on your establishment size and location

We offer three different levels of Farm Visit ~ see website for full details

- **Small** - up to 40 children
- **Medium** - up to 60 children
- **Large** - up to 120 children

Full details, including guidance on costs, available on the farm's website.

£40 discount off Medium and Large Visits if the school also undertakes a School Trip to Farmer Gow's during 2015.

Complimentary Farmer Gow's raffle prize provided with all Medium and Large Visits.

Complimentary 'Fun at the Farm' Oxford Reading Tree book with every booking.

**What we need to know** ~ please see website for full details including an Expression of Interest form.



Farmer Gow's can come to your School!

See website for details

**Farmer Gow's**

[farmergows.co.uk](http://farmergows.co.uk)

The graphic features a light blue background with a green grass strip at the bottom. On the left is a pink pig, in the center is a green tractor with a smiling face, and on the right is a white duck with its wings spread. The text 'Farmer Gow's can come to your School!' is written in a large, bold, black font. Below it, 'See website for details' is written in a smaller, black font. The 'Farmer Gow's' logo is a green oval with a yellow border containing the text 'Farmer Gow's' in white. At the bottom, the website address 'farmergows.co.uk' is written in black.

# Farm Visits to Schools

## What we offer ~

**Workshops** ~ 25-30 minute 'Meet the Animals' sessions for 20-25 children.

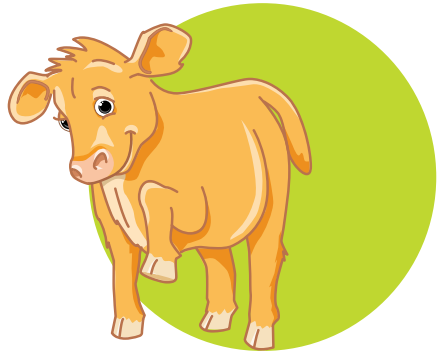
**'Drop-in' facility** - Farmer Gow's stand available for adults and children to visit when they wish, suitable for fetes and open days.

**Quotation** - the farm will provide a quotation for each Farm Visit according to the information provided.

**Working area** - we will arrive in the farm's Toyota truck (and for bigger events/groups - with 12' long livestock trailer). Please provide an outdoor working area, accessible by the truck/trailer. The truck holds equipment which will be required during the visit. Truck access is therefore very important.

**Supervision** - Farmer Gow's staff will manage the farm animals. The School/ Group we are visiting will be responsible for the supervision of the children.

**Programme** ~ we will provide a programme for our visit, tailored to your individual needs.



'Fantastic visit - very good deaf awareness, e.g. telling me when any information was going to be given so I could be ready to sign.' Mid-Oxon Resource Base



# Workshops for Children

## A unique educational experience

'Hands On', behind the scenes workshops for families and children, helping with all the farm animal feeding and welfare.

Full details on the farm's website - including booking forms

## Workshops available ~

- **Be a Family of Farmers**

Workshop for a family of up to 4 persons

Minimum of 1 adult with children (age 6+ years)

Available daily February - November

Monday - Saturday 10 am - 3.30 pm

Sunday 1 - 5 pm

- **Be a Shepherd for a Day**

Workshop for children aged 10+ years

Maximum of 2 children/day

Available daily February - March, 10 am - 4pm

- **Be a Farmer for a Day**

Workshop for children aged 10+ years

Maximum of 2 children/day

Available daily April - October, 10 am - 4pm



All workshops are suitable for home schooled children

